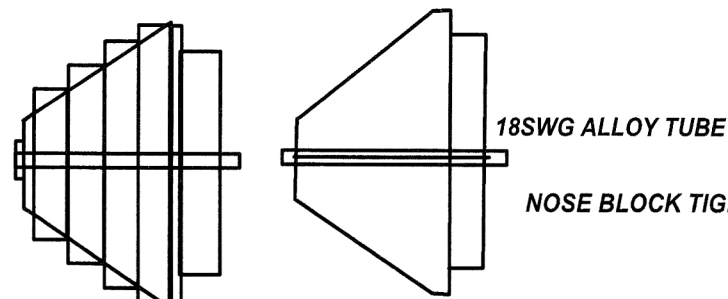
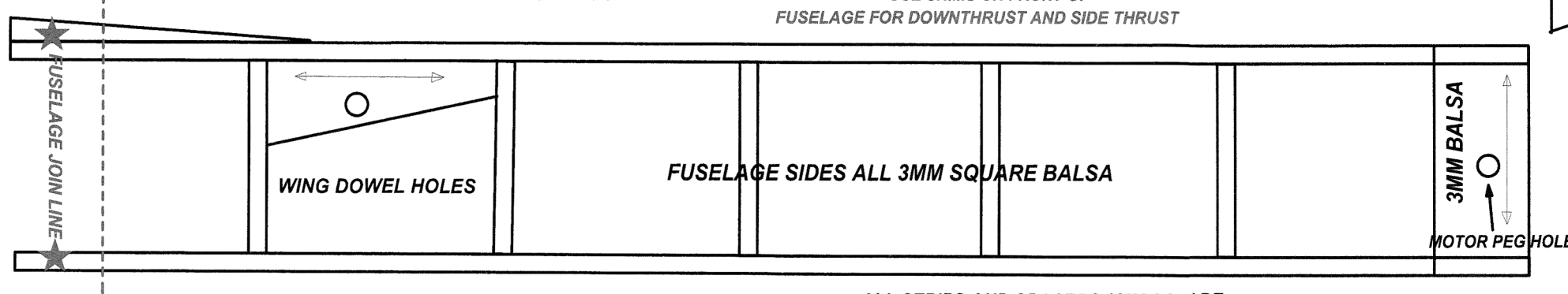


THE "RUFFIAN"!!!

5MM SHEET BLOCKS TO FORM NOSE BLOCK



1.5MM PLY AT FRONT AND REAR OF NOSE BLOCK



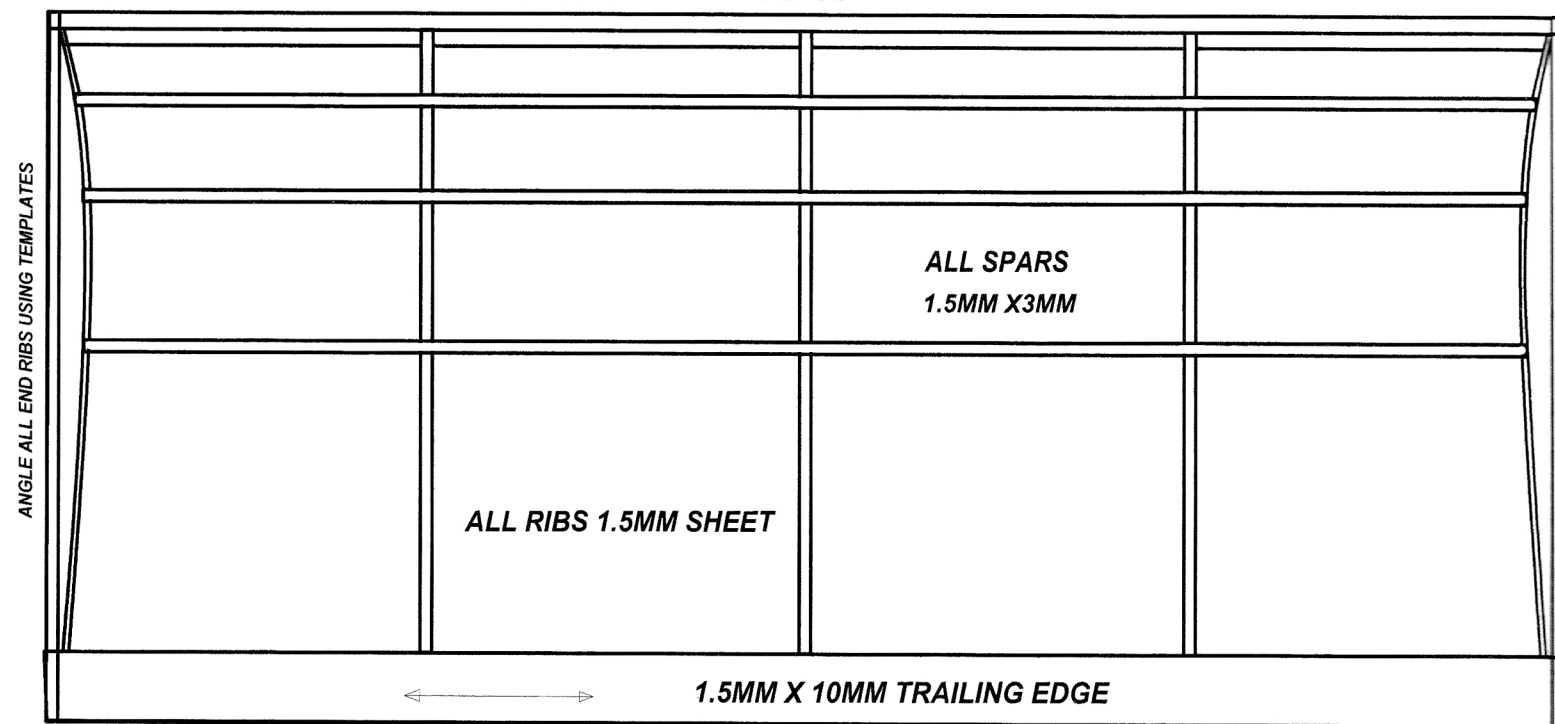
ALL STRIPS AND SPACERS 3MM SQUARE

3 DEGREE'S DOWNTHRUST
3 DEGREE'S RIGHT SIDETHRUST

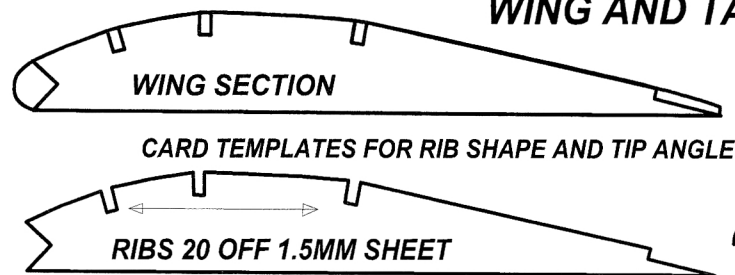
USE SHIMS ON FRONT OF FUSELAGE FOR DOWNTHRUST AND SIDE THRUST

5MM X 5MM LEADING EDGE

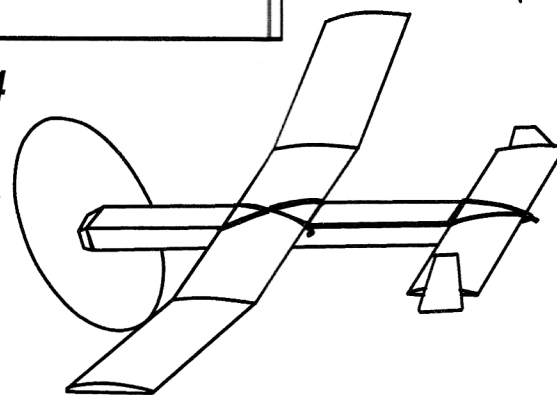
ALL STRIPS AND SPACERS 3MM SQUARE



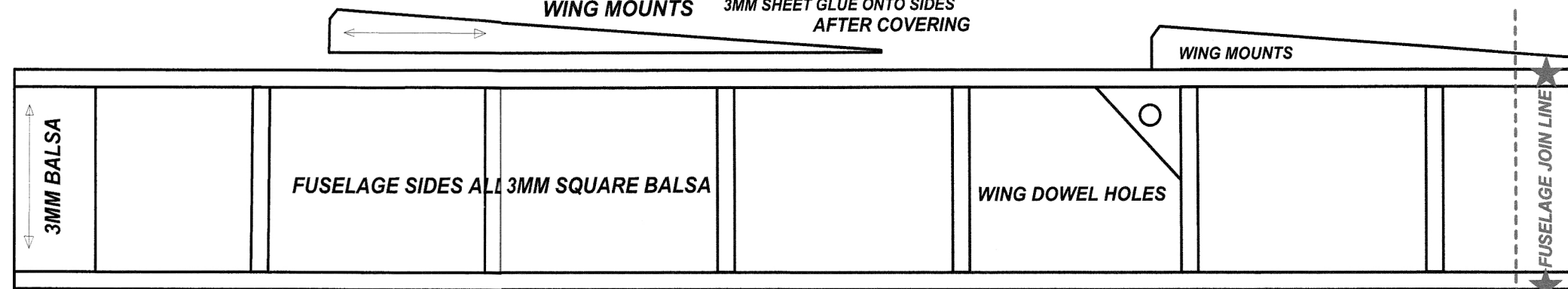
WING AND TAIL-PLANE PANELS MAKE 4



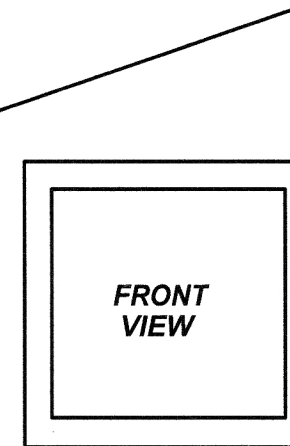
ANGLE ALL END RIBS USING TEMPLATES



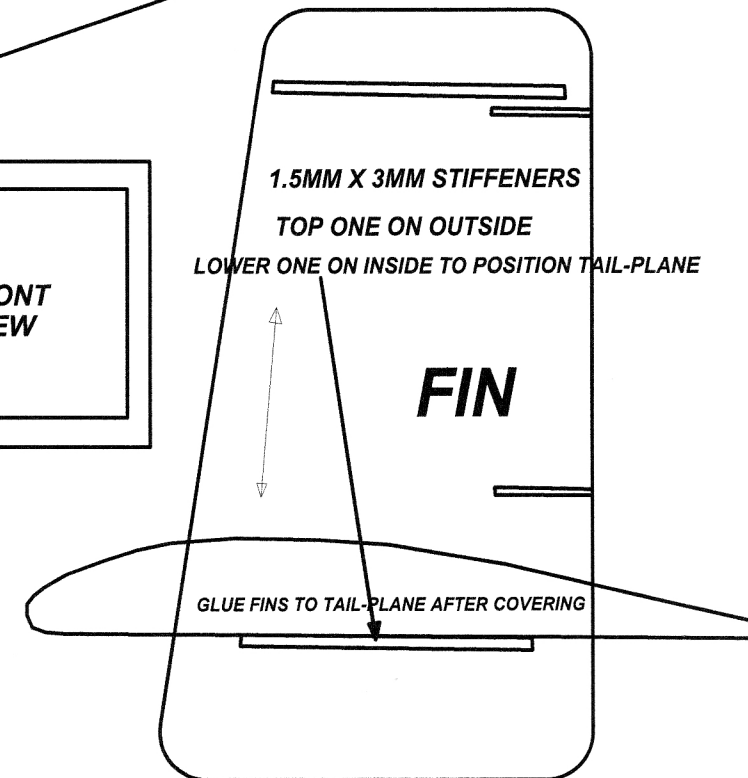
WING MOUNTS 3MM SHEET GLUE ONTO SIDES AFTER COVERING



1.5MM SHEET TAIL PLANE MOUNT



1.5MM X 3MM STIFFENERS
TOP ONE ON OUTSIDE
LOWER ONE ON INSIDE TO POSITION TAIL-PLANE



FINS 2 FROM 1.5MM SHEET
RIGHT HAND ONE WITH CUTS FOR TRIM TAB

